

WALL, CAMPBELL, and POTTER RESIDENCE HALLS

UC DAVIS STUDENT HOUSING



Features

- High speed internet connections
- Full wireless connectivity
- Cable television connections
- Room controlled cooling/heating
- ADA compliant rooms & baths
- Card key controlled building & room access
- Furnished/carpeted rooms
- Lounges on each floor
- Study & class rooms
- Laundry rooms
- Community kitchen
- Large community ballroom
- New Tercero Quad
- 592 total beds

Project Details

- Project completion: Fall 2010
- Architect: Mogavero-Notestine
- Contractor: Brown Construction
- 155,000 gross square feet
- Total project cost: \$35 million



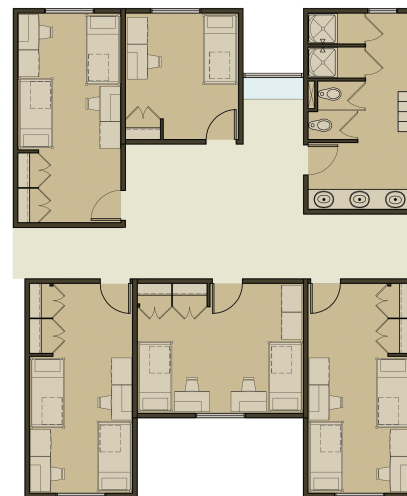
Housing 592 students, the new Wall, Campbell and Potter residence halls are located in the Tercero Area in the southwest quadrant of campus. The circulation and common space design of these three buildings promotes academic achievement and social interaction.

The 216 square foot furnished double bedrooms and 141 square foot furnished single bedrooms are grouped in clusters of five rooms which share a common bathroom. These clusters are organized along a central circulation spine with windows bringing light into the corridors. Each floor of five to six clusters has its own student lounge area adjacent to the resident advisor room. Laundry rooms and study lounges are located on the first floor of each building.

Leadership in Energy & Environmental Design (LEED)

The project is registered under the U.S. Green Building Council's LEED program, with the certification goal of Gold. Highlights:

- Exceptional on-site water retention: pervious concrete, drought-tolerant landscape, bio-swaes and rain garden retention areas
- Excellent design for bicycle parking; 1 bike parking spot per resident
- Solar thermal system
- Low flow faucets, toilets, and shower heads
- Dual-stream waste chute to capture recyclable material
- Energy efficient lighting and LED site lighting
- Filtered drinking water dispensers
- Energy efficiency exceeds state regulations (Title 24) by more than 30%



Typical Bedroom/Bathroom Cluster